

Thunderbird Update – December 10, 2020



Dear Johnson Families,

Thank you for the kind notes, words of encouragement, and your support of late. We have had several of you reach out to let us know how we are doing and how much you appreciate the challenge we all face together.

Another change we face this year is a new report card. I am stealing the work of one of my colleagues because she has done such a nice job of illustrating this change. Please see below for an explanation of our new reporting system and resources for understanding this system. If you have questions about your child's report card, please direct them to your child's teacher. If you have general questions, I am happy to answer them.

All my best,

Georgianna Dawson, Principal

Switch to Standards Based Report Cards

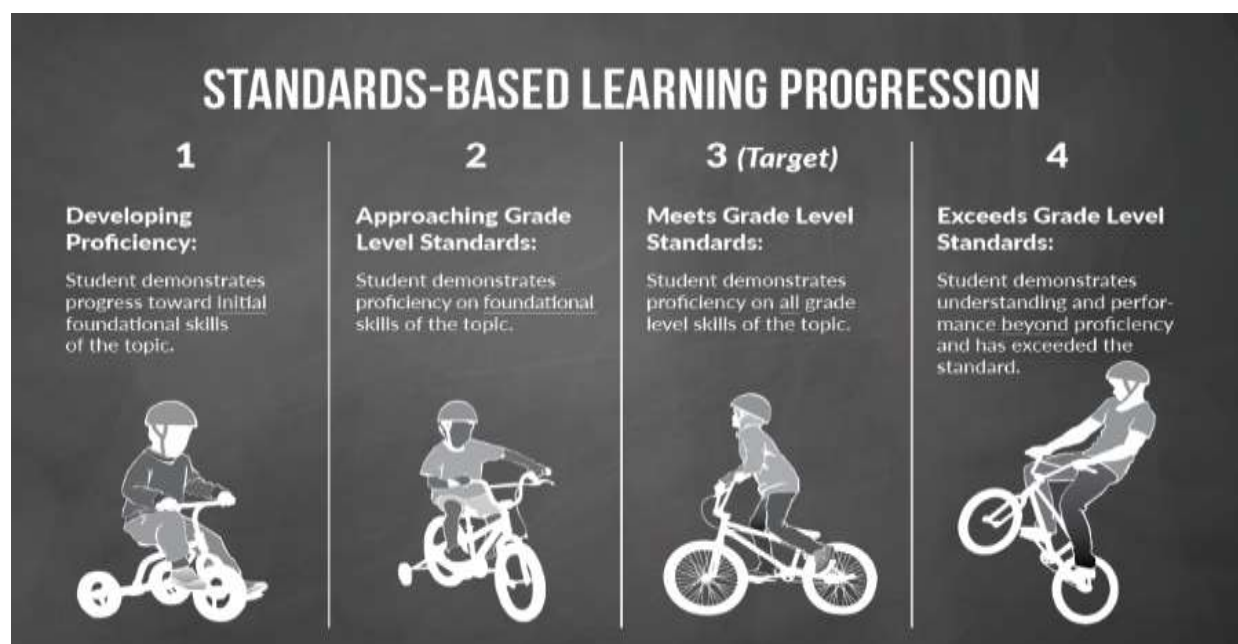
PSD has updated elementary report cards and moved to a standards-based system. If you have a child in middle school, you are familiar with this system. The new report cards align with how they are mastering grade level standards, and not simply a percentage. Teachers are able to provide more specific feedback on the actual skill or task and what the student needs to practice in order to improve.

Your students will now receive a mark of 1, 2, 3, or 4. **A mark of 3 indicates they are exactly where we expect them to be at this time.**

Effort & Personal Development	<i>Explanation of Marks</i>	Achievement
	Consistently shows a thorough understanding of the concepts or skills and extends understanding beyond the requirements of the standards.	4 = Exceeding Expectations
3 = Meeting Expectations	Shows a complete and correct understanding of the concepts or the ability to perform the skills as articulated in the standards.	3 = Meeting Expectations

2 = Approaching Expectations	Shows partial mastery of prerequisite knowledge and limited or incomplete understanding of the concepts or skills as articulated in the standards.	2 = Approaching Expectations
1 = Beginning Expectations	Shows a beginning understanding of the concepts or performance of the skills as articulated in the standards.	1 = Beginning Expectations
NA = Not Applicable		NA = Not Applicable

This representation, from Clear Creek Independent School District in Texas, is a great visual.



Please understand it will take some time for everyone to adjust to this new system. This includes shifting our classroom practices and assessments, training students, and providing more standards information to families. For example, previous progress reports this semester may not align directly with this new grading scale, as teachers are working to adjust their own grading practices”.

Continued

Families will be able to access report cards in ParentVUE at the end of each semester in both January and June.

Want more information on standards-based grading?

- http://www.ascd.org/publications/educational_leadership/oct08/vol66/num02/Seven_Reasons_for_Standards-Based_Grading.aspx
- <http://standardslearning.pbworks.com/f/Seven+Reasons+for+Standards+Based+Grading.pdf>
- <https://www.schoolology.com/blog/standards-based-grading>

Positive Corner

There is no greater calling than teaching our children and this year has thrown a wrench in orthodox teaching and learning methods. We have children in 3 different grades here at Johnson and can truly say that the amazing and creative work of Mrs. Hallisey, Mrs. Clark and Mrs. Mcnamee in addition to the Specials teachers has helped unveil new ways to try and engage and keep kiddos on track. We are truly grateful for the teachers' and staff's compassion towards the kids and grace towards parents given the challenges during this pandemic. Johnson is a beautiful community, and we are thankful to be a part of it.

~Alan and Sarah Hathcock

Student Portraits are Here!

If you ordered pictures of your child – you will be receiving the picture packet in the Friday work distribution box at his/her classroom door this week. If you have questions about the pictures please reach out to Skillman Photography at staff@skillmanphotography.com. There will be a Picture Re-Take day offered in January for those families who missed picture day – or would like a re-take. Watch for more information in the coming weeks.

Holiday Music Video Reminder – Due TOMORROW

Ms. Mathias is accepting solo, sibling, or family videos of winter or holiday songs. They can be videos of you singing, dancing, and/or playing instruments. Winter, Christmas, Hannukah, and Kwanza music is best. It is strongly suggested to include a backing or accompaniment track of music if you are singing a song or performing a dance. Ms. Mathias will accept videos of high quality and include parts of them in the winter music video. Ms. Mathias suggests recording it on a cell phone and then uploading it to google drive and e-mailing it. **Please e-mail your videos to Ms. Mathias at bmathias@psdschools.org by Friday December 11th!**

Kindergarten LIVE Virtual Open House – January 7

Due to COVID safety protocols we are not able to offer our Kindergarten Open House “in person” this year. However, we are planning to offer a LIVE Virtual Open House on Thursday, January 7th at 6:00 p.m. Watch for more information and instructions on how to join soon in up-coming news updates. If you know of families who have children who will be entering Kindergarten next school year – please share this information with them.



Kindergarten Registration 2021 – 2022 – January 14

Kindergarten is an exciting and important first step on your student’s educational journey. Kindergarten Registration for the 2021 – 2022 school year is just around the corner. Kindergarten Registration is scheduled for Thursday, January 14th will be online only. Registration information has not been updated for the 2021 – 2022 school year yet – but we expect it will be soon! Please visit the PSD Website for the most up to date information: [Kindergarten Registration](#).



All new students register at their neighborhood school. You can find your neighborhood school on the [School Locator web page](#). Kindergartners must be 5 years old on or before October 1.

School Options and Choice for School Year 2021 – 2022

Applications are being accepted for the 2021 – 2022 school year. **The deadline for 1st round applications is Friday, January 15th at Noon** for all grades (K-12).

PSD’s School Choice program allows families to select the school that best meets their child’s educational needs based on space availability and eligibility requirements. A school choice application is required to attend a school that is not a student’s neighborhood school or to attend only by choice.

The first-round application deadline is Friday, January 15th for all grade levels. Application forms must be submitted online for the desired choice school or program. The order in which applications are received during this period does not affect a student’s chances or acceptance. Parents must complete and submit a separate application for each child.

For complete details and application visit this website: [School Options and Choice](#)

Discipline/Code of Conduct and Student Expectations

Discipline should be an educational opportunity. Students learn from their mistakes and we want to reinforce positive choices. We use a minor/major system for behavior referrals. All minors are dealt with at the instructor level while majors are handled through our administration. We will monitor discipline through an online system (SWIS) that helps to identify times and locations of repeated discipline offenses. This monitoring system helps us to implement changes to address these repeated offenses. If you would like more information about our discipline system here at Johnson, visit our PBIS information on our website.

Poudre School District has developed a [Student Code of Conduct](#) that outlines behaviors that are acceptable at school and behaviors that are not acceptable at school. The Student Code of Conduct also outlines appropriate disciplinary measures to address inappropriate behaviors. You will receive more information about the PSD Student Code of Conduct early in the year via e-mail.

Johnson Calendar of Events

December		
8		Webber MS Preview Launch - https://web.psdschools.org
14	4:00 – 5:00 pm	JPTO Executive Board Meeting *Virtual
18		Second Quarter Ends
21 – 31		NO SCHOOL – Winter Break
January 2021		
1		NO SCHOOL – Winter Break
4		NO SCHOOL – Staff Workday
7	6:00 – 7:00 pm	LIVE Virtual Kindergarten Open House
11	4:30 pm 4:00 – 5:00 pm	Reports available to view in ParentVUE JPTO Executive Board Meeting *Virtual
13	6:00 – 7:30 pm 6:00 pm	SAAC Committee Meeting *Virtual Webber MS – Live Virtual Open House https://web.psdschools.org
14		Kindergarten Registration for 2021/2022 School Year
15	Noon	First Round School of Choice Deadline
18		NO SCHOOL – Martin Luther King Jr. Holiday
25	6:30 – 7:30 pm	JPTO General Membership Meeting *Virtual
February		
8	4:00 – 5:00 pm	JPTO Executive Board Meeting *Virtual
15		NO SCHOOL – Staff Workday
22	6:30 – 7:30 pm	JPTO General Membership Meeting *Virtual
March		
8	4:00 – 5:00 pm	JPTO Executive Board Meeting
10	6:00 – 7:30 pm	SAAC Committee Meeting
12		End of 3 rd Quarter
14		Daylight Savings Time Begins
15 – 19		NO SCHOOL – Spring Break
20		Spring Begins!
22	6:30 – 7:30 pm	JPTO General Membership Meeting

Frequently Asked Questions and Resources

Answers to other common questions are available on the PSD website. [Read more >>](#)

Technical Support	Health & Safety	2020-21 School Year	ParentVUE	PSD Virtual
Calendar	Transportation	School Meals	District Policies	Departments

In Case you missed it!

Attendance and Absence Reporting

If your student is ill during Phase 1, please continue to call the attendance line.

If your child will be absent or tardy, please call our school attendance line at 970-488-5095. Be prepared to answer the following questions:



If your child is ill, is he/she experiencing any of these COVID-like symptoms:

- Fever or chills
- Cough
- Shortness of breath or difficulty breathing
- Fatigue
- Muscle or body aches
- Headache
- New loss of taste or smell, OR
- Sore throat

Please leave a detailed message about your child's symptoms, information about any possible exposure to a COVID-19 case, and your phone number to receive a call back from our health office staff.

Snow-cially Distanced Holiday Decorating Contest

Johnson PTO is excited to announce our first ever snow-cially distanced holiday decorating contest. The goal is to spread joy to our community through creative displays and beautiful lights while bringing families together to share the excitement of the holiday season. Join in the fun, get in the holiday spirit, and let's bring a glimmer of joy to our community this holiday season.



All information can be found here: <https://johnsonpto.weebly.com/snow-cially-distanced-holiday-decorating.html>

Kelly Steinway, JPTO Rep

Counselor's Corner



There are also several holiday programs and resources available through community agencies. If you need additional information, please contact Wrenn Thornton, Johnson's Secretary at wthornto@psdschools.org (970-488-5003) or Jason Allen at jallen@psdschools.org (970-488-5038).

We are still welcoming donations to the Johnson "Giving Tree". Over the years, it has been an honor to serve many Johnson families through this fund. We have been able to purchase much needed items to help get families through some difficult times. This year, especially, a lot of students and families may have a need and we are hoping that by continuing our Giving Tree efforts, we can continue to be a community school that brings supports together for those in need. The school staff and so many of our Johnson families appreciate so very much all of you who have contributed to this over the years!

If you would like to contribute, we use SchoolPay as a means for people to donate. As you know, we usually use change jars. This isn't possible this year. The intention, though, is still the same. Any amount you feel comfortable with goes directly to providing resources for families at our school (utilities, clothes, winter gear, etc). Click on the SchoolPay link, choose Giving Tree, and donate the amount you would like: [SchoolPay](#)

Thank You So Much and Best Wishes,
Mr. Allen, School Counselor

Poudre Library Winter Reading Challenge

Poudre Libraries is offering a **Winter Reading Challenge** for all ages including adults! We hope this offers some incentive to keep reading over the winter months.



The reading challenge runs from **Nov. 16, 2020 - Feb. 7, 2021 but you can sign up any time after the challenge begins!**

1. A Winter Tale **reading logs** are available at the libraries and online – these can be accessed by using the Curbside Pickup Service or by visiting www.poudrelibraries.org/winter
2. Starting Monday 11/23, there will be an **online Grand Prize Entry form available** on the Winter Reading Challenge webpage so people can enter the drawing that way.
3. **Completion prizes** are set to be available for pick up beginning 12/1 and run through 2/7/21

AlphaBEST Education

Did you know **AlphaBEST Education** offers a program that facilitates the student's distance learning and adds enrichment, fitness, fun and quiet time in a safe and supervised environment? They offer programs at several Poudre School District locations. The program starts on Monday, November 30th. Hours: 7:00 a.m. - 5:30 p.m., Monday - Friday.

A secure registration platform is available on the [AlphaBEST website](#).

Please contact AlphaBEST with questions: 972-668-0640 or customerservice@alphabest.org

PSD continues distributing meals for free to students 18 and under

When PSD is in Phase1 Remote Learning, meals will be available for students to pick up at designated school and mobile sites. The USDA extended its school district reimbursement program, so meals will be free for all children 18 or younger through the end of the 2020-21 school year, instead of through December as previously communicated. The Food Bank of Larimer County meal sites are also open to all children 18 or younger. See the full list of locations on the [PSD Meals During 2020-21 web page](#). >>



Tech Support

[PSD Community Tech Portal](#): Technical support information, how-to guides, documentation and more.

[Technical Support and Resources](#): General overview of tech support, teacher learning pages and links to Poudre River Library videos.

- Email: covidtechhelp@psdschools.org
- Phone: Family and Student Support Line at 970-490-3339

Early Childhood Education

PSD's preschool program still has open spaces for the 2020-21 school year, and ECE's compassionate and professional teachers can't wait to work with the children in your lives. More families may qualify now than ever before. To learn more and begin an application online, visit the [Early Childhood Education web page](#) or call 970-490-3204.



COVID resources

To continue our PSD communities' health and safety, here are some of the resources created specifically for our staff and students, in collaboration with the Larimer County Department of Health and Environment.

- [COVID-19 School Status and Information web page](#): This page features PSD's recently launched data dashboard and information about COVID-19 case assessments.
- [PSD COVID-19 protocols](#): Staff and student protocols for a COVID-19 case or outbreak in PSD.
- [Return to Learn](#): When students and staff can return to school and work after experiencing illness symptoms.
- [Health and Safety web page](#): Information on the 3 W's best practices, cleaning and sanitizing of schools.
- [Larimer County COVID-19 data](#): Current COVID-19 data from the Larimer County Department of Health and Environment.
- [PSD employee symptom-tracking app](#): Complete before entering any PSD school or facility.
- [COVID Applications and Support](#): Documentation, FAQs and technical guidance on COVID applications and related systems.

Quick Links

- [Johnson Elementary Website](#)
- [PSD Schools Parent Website](#)
- [District News](#)
- [PSD School Calendars & Schedules](#)



The Poudre School District is committed to the policy that no otherwise qualified person shall be denied access to, be excluded from participation in, be denied the benefits of, or be subjected to unlawful discrimination under, any District program or activity on the basis of race, color, religion, national origin, ancestry, sex, sexual orientation, marital status, veteran status, age or disability. District compliance with this policy shall be the responsibility of, and reports and complaints of discrimination based on these protected classifications should be directed to: For District students and community members: Director of Student Services, 1630 South Stover Street, Fort Collins, Colorado 80525, phone: 970-490-3033; For District employees: Executive Director of Human Resources, 2407 La Porte Avenue, Fort Collins, Colorado 80521, phone: 970-490-3620.