



Johnson Elementary

Thunderbird Times January 2021

Johnson Elementary
4101 Seneca St
Fort Collins, CO 80526

Main Phone Line
970-488-5000

Attendance Line
970-488-5095

Principal

Ms. Georgianna Dawson
970-488-5002
gdawson@psdschools.org

Assistant Principal

Mr. Matt Hughes
970-488-5015
mhughes@psdschools.org

Office Manager

Ms. Tina Crewdson
970-488-5001
tcrewds@psdschools.org

Secretary/Health Tech

Ms. Wrenn Thornton
970-488-5003
wthornto@psdschools.org

School Counselor

Mr. Jason Allen
970-488-5038
jallen@psdschools.org

School Website

<http://joh.pdschools.org>

School Hours for in-person learning:

8:50 a.m.—3:28 p.m.

Principal's Corner

Dear Johnson Families:

Happy New Year! We hope this communication finds you and your family healthy and happy. Our first few days in remote learning have gone well. Thank you to all our families who have picked up needed supplies for this week. We will have another distribution tomorrow, January 8, 2021 to support your child's learning at home next week.

We are excited for the return of all students to in-person learning on January 19th.

As a reminder, our goals as we entered the 2020-21 school year were the following and are the same goals as we enter into our second semester of 2020-21:


- We stay in face-to-face teaching and learning for as long as possible.
- We create systems, so we minimize the risk of getting sick for students, staff, and families.
- We create new routines, so students feel safe at school, staff feel safe at work, and families feel safe.
- We are intentional about devoting time and support to mental health and connections, and we create a system where all students can access learning and grow academically.



continued on next page

All Women. Always.
Comprehensive women's healthcare for all stages of life.

Loveland & Fort Collins



The Women's Clinic
of Northern Colorado

970.493.7442
womensclinicnoco.com

No health insurance?
You may qualify for financial help.



Free virtual and in-person appointments

Open Enrollment starts Nov. 1

Health District
LARIMER HEALTH CONNECT
970-472-0444
larimerhealthconnect.org



**FORT COLLINS
CONNEXION**

YOUR COMMUNITY-DRIVEN AND COMMUNITY-OWNED FIBER NETWORK!

**NO DATA CAPS!
NO CONTRACTS!
NO INSTALL FEES!**

Learn more & sign up for notifications at
FCCONNEXION.COM

Auxiliary aids and services are available for persons with disabilities.



Principal's Corner

continued

The health and safety guidelines we will follow in a synopsis are the following:

- Frequent handwashing
- Face coverings required
- Restricted mixing between groups when possible
- Specials rooms are sanitized between cohort groups
- Lunch and breakfast are in classrooms
- Staggered arrival and dismissal procedures
- Social distancing practices within the classroom as much as possible
- Socially distanced recess for cohort groups
- Frequent cleaning of frequently touched surfaces
- No visitors and volunteers will be allowed in the school
- Ongoing symptom monitoring for staff and students (families will monitor symptoms and keep symptomatic children home)

We will follow the Larimer County Health and Environment Department's guidance. Our strategies to stay open and keep all safe across our district are to follow the "3 W's": Wear a mask, wash hands, and watch distance. We have designed schedules to allow for frequent cleaning, to honor the above health guidelines, and keep students in classroom cohorts as much as possible.

continued on next page

CLICK IT



Click on the Ads in this Newsletter

...to learn more about these great companies!

page 2



Since 1964 We've Been Growing Healthy Kids



-  Well Care Visits for Kids & Teens
-  Designated "Sick" & "Well" Locations
-  Phone Nurse Available
-  4 Convenient Locations

Call to Schedule Your Appointment: 970.482.2515

INSPIRE KIDS TO DO



**4-H
OPEN
HOUSE**

Jan 14th | 5:30 - 6:30pm

On Zoom!

Click this ad to register.
LarimerExtension.org

Principal's Corner

continued

Here is what we expect of families:

- Complete symptom checks for your children every day.
- Keep your children home if they are symptomatic or sick.
- Reinforce the safety measures we put in place at school.
- Help your children to understand this will pass, and we hope to return to "normalcy" as soon as possible.
- Provide your children with a mask and teach them how to wear and care for masks. The mask should fit snugly.
- Remind your children to wash their hands frequently.
- Communicate with us about cases and potential exposures.

If you have questions, I would guide you to look to the following resource: <https://www.psdschools.org/psd2020-21/healthsafety>. You can also give our office a call, and we will answer questions based on the latest conditions and information.

In closing, we walk as one and we continue to be in this together. We are excited to see your children as they re-enter in-person learning. Please look for updates on Thursdays as we usually do.

Best to you all,
Georgie Dawson, Principal

CLICK IT

Click on the
Ads in this
Newsletter



...to learn more about
these great companies!

page 3

 **Salud** Fort Collins
Family Health Centers

**WE ARE HERE FOR
YOUR CHILD'S HEALTH!**

MEDICAL ■ DENTAL ■ PHARMACY
BEHAVIORAL HEALTH

saludclinic.org



Call us to schedule
your appointment today!

(303) 697-2583

ARSENAL

COLORADO

**Northern Colorado's
Premier Soccer Club**

Leagues for Girls & Boys ages 4-18

**Spring Recreational League
Registration Opens
January 6**



Register online or stop by
our office to sign up.
Visit our website for more
details!

2721 S. College Ave., Fort Collins, CO 80525 - 970.226.4253 - www.soccerfortcollins.org

Articles included in today's issue:

- [PSD – January 2021 Plan](#)
- [LIVE Virtual Open House](#)
- [Kindergarten Registration](#)
- [School Choice for SY 2021 – 2022](#)
- [Positive Corner](#)
- [JPTO General Membership Meeting](#)
- [Calendar of Events](#)
- [Frequently Asked Questions & Quick Links](#)
- [In Case you Missed It!](#)
 - ◇ [Switch to Standards Based Report Cards](#)
 - ◇ [FREE Meals to PSD Students \(PreK-12\) through end of 2020/21 school year](#)
 - ◇ [Transportation Information](#)
 - ◇ [How COVID-19 Case Protocols will Shift](#)
 - ◇ [Supporting our Students with Disabilities](#)
 - ◇ [Johnson JPTO Overview](#)
 - ◇ [Ongoing Fundraising for Johnson](#)
 - ◇ And much more....



TALKING TO
SOMEONE
CAN HELP.

OUT
OF SORTS
THESE DAYS?

970-221-5551
24/7 | NO COST

connections

Reach Parents in Larimer County through our mobile-ready newsletters

Market your business in both Poudre and Thompson school districts.

You gain visibility and targeted, increased awareness; schools gain funds from advertising revenue.



**SELLER'S
MARKET**
Call today!



Joe Mivshek
970.420.7163
joe.mivshek@km.com



kw KELLERWILLIAMS. REALTY
NORTHERN COLORADO

PSD – January 2021 Plan

We are confident you have read the December 17th communication from PSD regarding the plan for January. Grades K – 5 will be returning to “in-person” learning, five days per week, beginning January 19. If you missed the communication, read it here: [PSD plans for after winter break](#)

- January 5 – 14 Preschool in A/B hybrid model
- January 5 – 15 All K – 5 students in **Phase 1** – Remote Learning
- January 18 **NO SCHOOL** – Martin Luther King Jr. Day
- January 19 All K – 5 students in **Phase 4** – In Person Learning,
Mon – Fri

Preschool students will attend Monday – Thursday.

The district will communicate to families about plans for February and beyond as soon as possible. Please check your email frequently for updates.

LIVE Virtual Open House – January 7

In a school of choice environment, families have many choices of quality schools here in Poudre School District. We would humbly ask that you consider Johnson Elementary for your child’s school. Our mission is to “prepare today’s child for tomorrow’s world.” Below is a link to our live virtual open house on **January 7, 2021 from 6 – 7 pm**. The platform we use is Microsoft Teams.

Join here: [Johnson Open House](#)

Our amazing kindergarten team has also made the following informational video. Please watch the video prior to the virtual open house as our virtual open house will have a question and answer focus. [Johnson Kindergarten Information Video](#)

Below is “A Day in the Life of a Johnson Student” video. While this video was produced a few years ago, we continue to provide the services, environment, and academic support depicted. You can also find this video with more information about our school on our website: [Johnson Elementary Website](#)

[A Day in the Life of a Johnson Student](#)

Kindergarten Registration 2021/22 – January 14

Kindergarten is an exciting and important first step on your student’s educational journey. Kindergartners must be 5 years old on or before October 1.

Kindergarten Registration is scheduled for Thursday, January 14, 2021. Families register online for your neighborhood school. [Online registration](#) will open for the 2021-22 school year on Friday, January 8. Please visit the PSD Website for the most up to date information: [Kindergarten Registration](#). Please call our office if you have any questions, 970-488-5000.

All new students register at their neighborhood school. You can find your neighborhood school on the [School Locator web page](#). You may also call 970-490-3302 to speak with someone regarding school locations.

School Options and Choice for School Year 2021/22

Applications are being accepted for the 2021 – 2022 school year. **The deadline for 1st round applications is Friday, January 15th at Noon** for all grades (K-12).

PSD’s School Choice program allows families to select the school that best meets their child’s educational needs based on space availability and eligibility requirements. A school choice application is required to attend a school that is not a student’s neighborhood school or to attend only by choice.

The first-round application deadline is Friday, January 15th for all grade levels. Application forms must be submitted online for the desired choice school or program. The order in which applications are received during this period does not affect a student’s chances or acceptance. Parents must complete and submit a separate application for each child.

For complete details and application visit this website: [School Options and Choice](#)

Positive Corner

Everyone has been so nice and helpful all the time. Harper was so nervous to transfer schools and now is so proud to be at this school. Mrs. Walker is truly an amazing teacher and we are so thankful for her!!! She is so great with the kids and how she has things all organized so the parents can follow along with the slides is fabulous. If we can ask for her to transfer to the 4th grade and we get her next year that would be great! So, thank you, each one of you! You all are fantastic! We appreciate you all and can’t wait for the next years! My daughter and I are truly happy here at this school and it’s been a great experience even through these times.

~Christine Ferguson

Early Childhood Education transitions to four days a week in January

PSD's preschool program is currently in an A/B hybrid in-person model but will switch to full-time (four days a week, no school Fridays) starting Jan. 19, as preschool and K-5 students transition to [Phase 4 with health protocols](#).

PSD's preschool program still has open spaces for the 2020-21 school year, and ECE's compassionate and professional teachers can't wait to work with the children in your lives. More families may qualify now than ever before. To learn more and begin an application online, visit the [Early Childhood Education web page](#) or call 970-490-3204.

Join us for the next JPTO General Membership Meeting

JPTO General Membership meetings will generally be held on the last Monday of each month from 6:30 p.m. – 7:30 p.m. **Our next meeting will be held virtually on Microsoft Teams on January 25 at 6:30 p.m.** All Johnson parents and guardians are welcome.

If you would like a link to the meeting or have any questions and ideas on how to better serve our Johnson community please email JPTO80526@gmail.com. As always, you do not have to be on the Board to attend these meetings and have a say in what goes on. You can attend PTO meetings and be a voting member without having an official role.

Frequently Asked Questions and Resources

Answers to other common questions are available on the PSD website. [Read more >>](#)

Technical Support	Health & Safety	2020-21 School Year	ParentVUE	PSD Virtual
Calendar	Transportation	School Meals	District Policies	Departments

Quick Links

- [Johnson Elementary Website](#)
- [PSD Schools Parent Website](#)
- [District News](#)
- [PSD School Calendars & Schedules](#)



Johnson Calendar of Events

January 2021		
5 – 15		K – 5 Students in Phase 1 – Remote Learning
7	6:00 – 7:00 pm	LIVE Virtual Open House
11	4:30 pm 4:00 – 5:00 pm	Reports available to view in ParentVUE JPTO Executive Board Meeting *Virtual
13	6:00 – 7:30 pm 6:00 pm	SAAC Committee Meeting *Virtual Webber MS – Live Virtual Open House https://web.psdschools.org
14		Kindergarten Registration for 2021/2022 School Year
15	Noon	First Round School of Choice Deadline
18		NO SCHOOL – Martin Luther King Jr. Holiday
19	8:50a – 3:20p	K – 5 Students in Phase 4 – In Person (Monday – Friday)
25	6:30 – 7:30 pm	JPTO General Membership Meeting *Virtual
29		Virtual PRIDE Assembly *watch for details soon
February		
8	4:00 – 5:00 pm	JPTO Executive Board Meeting *Virtual
15		NO SCHOOL – Staff Workday
22	6:30 – 7:30 pm	JPTO General Membership Meeting *Virtual
26		Virtual PRIDE Assembly
March		
8	4:00 – 5:00 pm	JPTO Executive Board Meeting
10	6:00 – 7:30 pm	SAAC Committee Meeting
12		End of 3 rd Quarter
14		Daylight Savings Time Begins
15 – 19		NO SCHOOL – Spring Break
20		Spring Begins!
22	6:30 – 7:30 pm	JPTO General Membership Meeting

Review the PSD Calendar for dates beyond this date:

In Case you Missed It

Important Information from Previous News Updates

Switch to Standards Based Report Cards

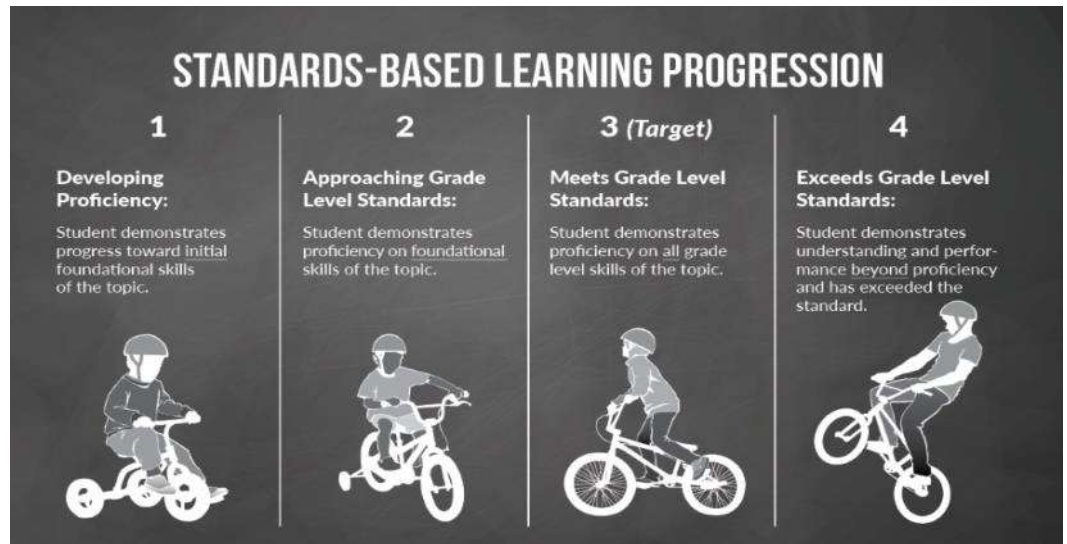
PSD has updated elementary report cards and moved to a standards-based system. If you have a child in middle school, you are familiar with this system. The new report cards align with how they are mastering grade level standards, and not simply a percentage. Teachers are able to provide more specific feedback on the actual skill or task and what the student needs to practice in order to improve.

Your students will now receive a mark of 1, 2, 3, or 4. **A mark of 3 indicates they are exactly where we expect them to be at this time.**

Effort & Personal Development	<i>Explanation of Marks</i>	Achievement
	Consistently shows a thorough understanding of the concepts or skills and extends understanding beyond	4 = Exceeding Expectations
3 = Meeting Expectations	Shows a complete and correct understanding of the concepts or the ability to perform the skills as articulated	3 = Meeting Expectations
2 = Approaching Expectations	Shows partial mastery of prerequisite knowledge and limited or incomplete understanding of the concepts or	2 = Approaching Expectations
1 = Beginning Expectations	Shows a beginning understanding of the concepts or performance of the skills as articulated in the standards.	1 = Beginning Expectations
NA = Not Applicable		NA = Not Applicable

Switch to Standards Based Report Cards

This representation, from Clear Creek Independent School District in Texas, is a great visual.



Please understand it will take some time for everyone to adjust to this new system. This includes shifting our classroom practices and assessments, training s

students, and providing more standards information to families. For example, previous progress reports this semester may not align directly with this new grading scale, as teachers are working to adjust their own grading practices”.

Families will be able to access report cards in ParentVUE at the end of each semester in both January and June.

Want more information on standards-based grading?

- http://www.ascd.org/publications/educational_leadership/oct08/vol66/num02/Seven_Reasons_for_Standards-Based_Grading.aspx
- <http://standardslearning.pbworks.com/f/Seven+Reasons+for+Standards+Based+Grading.pdf>
- <https://www.schoolology.com/blog/standards-based-grading>

Meals will still be available to any PSD students

The district will provide free meals to PSD students (PreK-12) through the end of the 2020-21 school year. [PSD Meals During 2020-21 web page >>](#)

- ◇ All current PSD meal programs will continue at schools/kitchens as they are now in Phase 1-3.
- ◇ Elementary school kitchens will transition to only serving students who are in-person when schools move to Phase 4.
- ◇ Secondary sites serving meals now to any PSD students will still do so in Phases 2-3.
- ◇ Mobile meal sites will continue in January as they are now.

Transportation as we look ahead

Busing will continue as it is now:

- The weeks of Jan. 5 and 11 for PreK-5 students
- The weeks of Jan. 5 and 11 for 6-8 students
- The weeks of Jan. 5, 11 and 18 for 9-12 students

Those who were bused in Phase 1 and Phase 3 are not guaranteed transportation as phases change by grade level after winter break. Busing is guaranteed for students for whom transportation is legally required (i.e. those with Individualized Transportation Plans (ITP) and some foster students). As additional available seats are identified, Transportation Services will notify PreK-5 families if their students receive bussing around Jan. 8. We anticipate that Transportation will continue to add riders through February. [More information >>](#)

Supporting our students with disabilities

See how staff support the learning and growth of students with disabilities in any educational phase, get answers to frequently asked questions and more.

[Read more >>](#)

How COVID-19 case protocols will shift

Due to recent changes to state and county public health guidance for schools and to prepare for the return of students after winter break, PSD staff are updating the district's COVID-19 and illness protocols. We aim to complete this work prior to the start of in-person education in January so staff, students and families have the information they need to have ownership in our culture of safety and keep one another as safe as possible. If changes are made to existing district protocols, updated information will be available on the following web pages.

- [PSD COVID-19 Data and School Information:](#) (Previously the "School Status and Information page.") Several significant updates have been made to PSD's COVID-19 data dashboards that inform decisions made about education this school year. One among multiple new dashboards includes the "PSD 14-Day COVID-19 Location Screening." Using this tool, PSD can review the number of cases and 14-day case trends to see if cases are rising, declining, or staying flat by location. Following winter break, when a school has a case percentage that goes over 1%, district leaders will monitor the location closely and consult with school administrators to determine the level of disruption to learning and whether partial school or whole school temporary closure is necessary. This is one significant change families should prepare for as we look ahead to in-person learning in January.
- [PSD COVID-19 protocols:](#) Staff and student protocols for a COVID-19 case or outbreak in PSD.
- [Return to Learn:](#) When students and staff can return to school and work after experiencing illness symptoms.
- [Health and Safety web page:](#) Information on the 3 W's best practices, cleaning and sanitizing of schools.
- [Larimer County COVID-19 data:](#) Current COVID-19 data from the Larimer County Department of Health and Environment.

It is incumbent upon us all to keep one another safe and to protect and support our healthcare workers and hospital staff so they can continue to have the capacity to help us when we need it. Here is how we show we care:

- Stick with only the people you live with at home and when you're out. Now isn't the time to have people over or to go out in groups.
- Wear a face covering.
- Watch your distance.
- Wash your hands.

Attendance and Absence Reporting

If your child will be absent or tardy, please call our school attendance line at 970-488-5095. Be prepared to answer the following questions:



If your child is ill, is he/she experiencing any of these COVID-like symptoms:

- Fever or chills
- Cough
- Shortness of breath or difficulty breathing
- Fatigue
- Muscle or body aches
- Headache
- New loss of taste or smell, OR
- Sore throat

Please leave a detailed message about your child's symptoms, information about any possible exposure to a COVID-19 case, and your phone number to receive a call back from our health office staff.

Student Council and Morning Fresh

Johnson's Student Council is still collecting Morning Fresh milk caps. There is a tote located near the front door at Johnson. Please use the hand sanitizer provided before opening the box. See flyer included in today's newsletter for more information.

Emergency Contact Information

Now, more than ever, it is very important that we have up to date emergency contact information for each student. Please be sure that we have current phone numbers for both parents/guardian, and additional emergency contacts in case we are unable to reach the parent/guardian. Parents can view and update information on file for your child through [ParentVUE](#).

If you are unable to access ParentVUE – please call our office (970-488-5000) to check the information we have on file for your child.

School Donations help with Learning Materials

These donation items are visible in SchoolPay: [Pay Fees/Charges Online](#)

Our budget has seen significant cuts due to the decrease in enrollment, caused by COVID-19. We are very thankful for the donations that we have already received from the Johnson Community.

- **Johnson Supplies: Kindergarten - 5th Grade 2020-21**

\$20 to cover all or a portion of the cost of purchasing expendable supplies to be used by all students for literacy, math, social studies, science, and craft activities. Waivers are not applicable; students will have access to the supplies regardless of whether payment is made. **For families with more than one child enrolled at Johnson – we would only ask for one donation of \$20.**

- **Johnson Student Planner: 4th & 5th Grade 2020-21**

\$4 To cover all or a portion of the cost of the planners. Waivers are not applicable; all students will receive a planner regardless of whether payment is made.

Parents wanted for the District Accountability Committee

The Poudre School District's District Accountability Committee is looking to fill several important representative seats for the 2021-2021 school year. We would love to have a representative from Johnson. Interested? [Here is information](#) about the committee and how to apply!

Join us for the next JPTO General Membership Meeting

JPTO General Membership meetings will generally be held on the last Monday of each month from 6:30 p.m. – 7:30 p.m. **Our next meeting will be held virtually on Microsoft Teams on January 25 at 6:30 p.m.** All Johnson parents and guardians are welcome.

If you would like a link to the meeting or have any questions and ideas on how to better serve our Johnson community please email JPTO80526@gmail.com. As always, you do not have to be on the Board to attend these meetings and have a say in what goes on. You can attend PTO meetings and be a voting member without having an official role.

Meet our JPTO Officers:

- President Andrea Evans
- Vice-President Wednesday Melssen-Vogel
- Treasurers Amelia Olschner
- Secretary Melissa Bolovitz
- Events and Fundraising Kelly Steinway and Shalese Payton

What exactly does JPTO do?

JPTO has previously sponsored events such as the Fund Run, Family Movie Night, Fall and Spring Book Fairs, Family Fun Nights, and Original Works just to name a few! This year we are looking at other creative ways we can safely provide school spirit events for our Johnson community. We would love your input!

Through fundraising JPTO has been able to purchase items for our school, support our amazing staff and community by providing appreciation weeks, spirit gear, and funding staff request for various needs. This year we will strive to continue this tradition to provide learning tools and experiences that teachers and students can benefit from to meet the moment, whether we are learning virtually or in the building at any point throughout the school year.

This year's needs may look different than previous years. We will continue to support our staff in ways that will keep your students safe and learning throughout the year.

Check out our new website <http://johnsonpto.weebly.com> and our Community Events page on Facebook <https://www.facebook.com/JohnsonElementaryCommunityPage/>

Please "like" our page to get notifications of upcoming Johnson events for the community and invite your Thunderbird friends!

Andrea Evans, JPTO President

Ongoing Fundraisers for Johnson Elementary

These passive fundraisers directly benefit Johnson Elementary discretionary fund/classroom budgets:

American Furniture Warehouse Fundraiser

Shop at any AFW location, online or by phone and mention Johnson Elementary at checkout. Our school will receive 2% donation on any purchase, 4% on Beauty Rest mattresses. Invite others to participate. Friends and Family can help too!

Caps4Cash – Morning Fresh Dairy Fundraiser

Caps4Cash is a Morning Fresh Dairy program where schools earn cash by collecting caps from Morning Fresh Dairy glass bottles. Each cap will be redeemed for 5 cents. We use this fundraiser to help support our Student Council Program.

Advertising Fundraising for Johnson

Organizations can purchase advertising in individual school newsletters through the [School Communications Agency](#). 60% of revenue from advertising goes back to the school to be used at the principal's discretion. Contact: (970) 239-1641

Fundraisers that Directly Benefit JPTO

Box Tops Fundraiser

Looking for a quick and easy way to help support our amazing school? Download the free Box Tops App. And register Johnson Elementary as your school and when you go shopping just go into the app and take a picture of your receipt and it will give our school .10 per participating items, just make sure you submit them within 14 days of your purchase.

King Soopers Community Rewards Fundraiser

Johnson has been added to the list of nonprofits eligible for funding through their community rewards program. We encourage our families to register your **King SooperCard** and choose Johnson as the designated nonprofit.

- Go to www.KingSoopers.com
- Scroll all the way down near the bottom of the page where you will see “**Community**” click on it.
- You will then see “**KingSoopers Community Rewards**” click on it.
- In the middle of the page you will see “**enroll now**” click on it.
- Next you will need to add your **email and password**.

Ongoing Fundraisers for Johnson Elementary

If you've never logged in before, but still have a card, you can attach an email and password to your existing number by creating an account.

If you don't have a card, choose "create an account".

A search box will open to select your charity – type "**Johnson PSD**" on the left of the screen. On the right, you can select "**education**" as type. Click on the magnifying glass for the search to work and select your organization.

There are two Johnson schools listed. The address is with it, so finding ours is easy and at the top. (4101 Seneca Street) Click "**enroll**"

Adding this card will not affect your gas points or other discount benefits you receive through King Soopers.

Amazon – Smile.amazon.com Fundraiser

Amazon has a wonderful giving program called [Smile.amazon.com](https://smile.amazon.com) that gives 0.5% of your qualified purchases to a charity of your choice. Here is how you can give to Johnson Elementary. All you have to do is register!

How to enroll:

Go to smile.amazon.com, scroll to the bottom of the page .

- At the bottom of the page click on "**get started**"
- It will take you to a login page. Log in with your **amazon account**
- On the task bar you will see **Your Charity**. You can then **select the charity**. Our registered name is **Johnson Parent Teacher Organization**. (It is not listed as Johnson Elementary.)

Know that all funds go to support our school, Johnson Elementary.

Remember you must log in from the smile page at smile.amazon.com **each time you make a purchase for the charitable donation to count.**

Thank you so much for supporting our school!